

# High Speed Roll Doors

A valuable solution for every location

ASSA ABLOY

ASSA ABLOY Entrance Systems

The global leader in  
door opening solutions



# We open the door to your business

ASSA ABLOY Entrance Systems is the world leading supplier of safe, convenient, reliable and energy efficient entrance solutions to ensure safe passage for vehicles, goods and humans.

The unique combination of the leading brands Besam, Crawford, Megadoor and Albany under one roof offers you product and service expertise for Automatic Doors and Loading Systems, which has been gained over decades, from one single source. Our team of experts is happy to assist you in planning, ordering, regular maintenance and modernization for as long as required.

Our intelligent products decrease the loss of energy, improve interior air, ensure sufficient daylight, control the air circulation including the rotation of pollutants or potentially harmful particles and optimize your facility in total.

This brochure provides you with an overview of the High Performance Doors of the brand Albany.



High speed roll doors are a good investment for the future. The rapid opening and closing speeds, the long operating life and the high safety standards in Albany's products means that customers quickly receive return on their investments. The rapid door speeds enable more efficient flow of materials and save on energy costs compared to conventional doors. Additionally, high speed doors are typically larger, operate at higher cycles and incorporate advanced safety features. The doors are fitted with the latest control systems, are easy to use, reach a speed of many metres per second and can if needed be opened and closed more than 100 times an hour. Doors of the brand Albany are appreciated by

numerous companies and industries all over the world. They are used in a wide range of applications from logistics to heavy industry.

Albany offers specially designed solutions to the food and pharmaceutical industries where good hygiene is critical. The application of our Machine Protection Doors in machine and production processes ensure smooth and safe operations in many companies.

Our special doors are also applied in refrigerated and cold storage areas.



# A high performance service

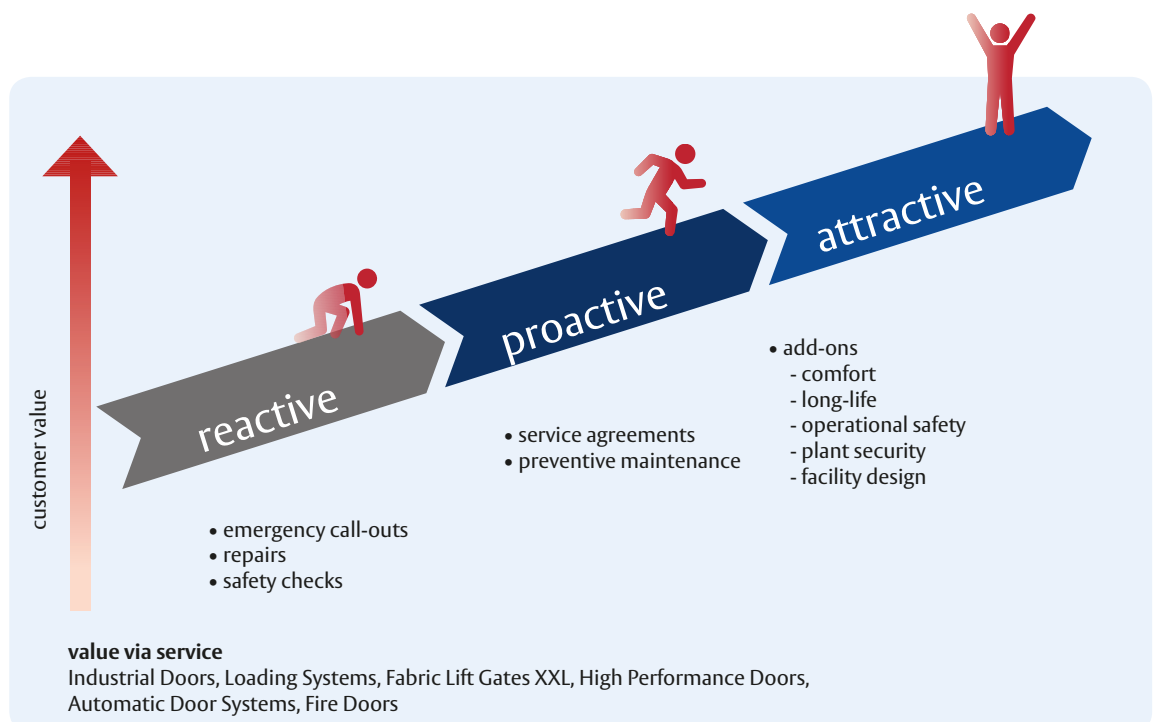


In case Automatic Doors, Industrial Doors and Loading Systems play a role in your daily operations it is vital to take great care to keep these in excellent conditions. There is no better partner than ASSA ABLOY Entrance Systems when it comes to safety and reliability of your doors. Besides our extensive range of products we additionally offer an excellent service of highly qualified experts with long-time experience and know-how.

ASSA ABLOY Entrance Systems is your service partner for your entire repair and maintenance requirements.

Our range of services entails three main issues:

- Repair and maintenance (reactive)
- Preventive inspections (proactive)
- Modernization (attractive)



# Special application doors

W max.: 3500 mm  
H max.: 3500 mm



## Albany RR300 Clean

The objective of a cleanroom door in a cleanroom area is to prevent unnecessary air infiltration and minimise the spread of airborne particles. Albany RR300 Clean is custom built for cleanroom applications found in pharmaceutical, electronics and semiconductor, research and aerospace industries. The door complies with international standards in line with DIN EN ISO 14644-1 and the Fraunhofer Institute has confirmed its suitability for use in cleanrooms. The door was certified in compliance tests for ISO Class 5 and GMP Class C. Albany RR300 Clean provides high air-tightness, which keeps the pressure drop at a minimum when the door is closed. The door is manufactured in stainless steel (V2A) with smooth surfaces that are easy to clean.

W max.: 4000 mm  
H max.: 4000 mm



## Albany RR300 Food

The foodstuffs industry door Albany RR300 Food is particularly suitable for use in the foodstuffs industry. Doors in these areas must be insensitive to cleaning agents, and be easy to clean and disinfect to maintain hygiene in production areas. Albany RR300 Food has been developed taking into account rules and regulations from the area of food processing machinery. The entire door is made from V2A stainless steel and has a smooth surface that is easy to clean. As an option a top roll cover is available. A gutter on the bottom profile prevents water from the curtain dripping into the door opening. A FDA-tested PVC curtain with white reinforcement stripes is available on request.

## Albany RP100

The Albany RP100 has been especially designed for interior use in the conveyor technique. The door meets all the requirements needed for a smooth and speedy material flow. It is solely intended for materials handling and passenger transportation is strictly prohibited.



W max.: 3000 mm

H max.: 3000 mm

## Albany RR200

The High Performance Door RR200 of Albany convinces with innovative curtain guidance for universal interior applications. Our latest curtain guidance technique in the sideframes combines the reliable crash mechanism with an optimum of air tightness when the door is closed. Due to the guidance in the sideframe via zip technology and the flexible curtain edge the curtain is automatically guided back into the sideframes after collision with an object. The slim construction gained by slim sideframes as well as the fast and easy assembly are further benefits of the Albany RR200. The modern drive technology and the frequency converter control Albany MCS ensure rapid opening and closing.



W max.: 4000 mm

H max.: 4000 mm

# Doors with flexible curtains

W max.: 4000 mm  
H max.: 4200 mm



## Albany RR300

The door was specifically developed as an internal door, but is also used in wind-protected external areas. The design principle of the Albany RR300 is based on a modular system. This means that the side frames can be either stainless steel or galvanised steel. Furthermore, there is a choice of curtains, ranging from PVC with coloured reinforcement strips, sturdy, high-tenacity RollTex® material, flame-retardant fabric or curtains either with vision panels or windows. There are alternative control systems for various speeds available.

W max.: 5000 mm  
4000 mm (F+R)  
H max.: 5000 mm  
4000 mm (F+R)



## Albany RR300 Plus

The Albany RR300 Plus is a compact, light high-speed door made with aluminium or stainless steel columns for the most diverse applications. The RR300 Plus has a standard counterbalance, which allows for manual self-opening of the door. Alternatively, an automatic self-opening system is available, whereby the door automatically opens in the event of a power failure. Due to its special additional features, the Albany RR300 Plus F+R is specifically deployed for areas in which doors are used as escape routes and have to open automatically if there is an emergency or if there are technical faults or power failures.

W max.: 4000 mm  
H max.: 4200 mm



## Albany RR355

Indicative of the Albany RR355 is the combination of a high level of technology and modern industrial design. Good wind resistance through the curtain tensioning system and wind protection elements, a self-repairing breakaway capability after a collision and a pre-running safety photocell for contactless protection of personnel and goods make the door an all-rounder for internal and external use. The door's side frames are made from anodised aluminium profile.



## Albany RR392

The Albany RR392 provides a rugged industry standard and offers customers a favourable price/performance ratio. The basic features of the door are intentionally limited to just the essentials. You can configure your Albany RR392 according to its intended use. The side frames are made from galvanised steel profile. A curtain tension system is standard. The door can be fitted with an optional knock out mechanism. As safety features, the door has an electric safety contact strip and a stationary safety photocell.



W max.: 6000 mm  
H max.: 6000 mm

## Albany RR450/600/600 G

The Albany RR450/600/600 G is an all-rounder and perfect for numerous industrial and logistical requirements. As an exterior door, it closes reliably and prevents drafts and cold. As an interior door, it separates bays, provides protection against noise and foreign particles. The door's side frames are made from aluminium. The standard curtain tension system ensures a firm smooth cutrain. The pre-running safety photocell is standard. Optionally, there is a self-repairing breakaway capability.



W max.: 7500 mm  
H max.: 6000 mm

## Albany RR600

The Albany RR600 is ideally suited for heavily-used openings and adverse conditions in both external and internal areas. The door is weather-proof and is resistant to extreme loads. It is resistant to wind loads in accordance to EN 12424, class 3, which corresponds to hurricane-strength wind speeds. The door's side frames and the roll cover are made from anodised aluminium. Upon request, a self-repairing knock out mechanism is available. The door curtain is made either from PVC or from RollTex® fabric.



W max.: 6000 mm  
H max.: 6000 mm

# Doors with rigid curtains

W max.: 8000 mm  
H max.: 6000 mm



## Albany RR3000 series

The Albany RR3000 series unites the highest level of function and design. Depending on the requirements and specific intended use, the Albany RR3000, Albany RR3000 Vision, Albany RR3000 R, Albany RR3000 ISO models provide different variants for various uses. All versions can easily cope with 2 – 4, EN 12424 wind loads.

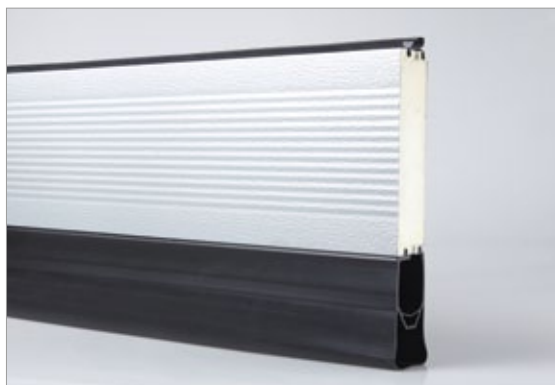
All Albany doors of the type RR3000 are doors where the aluminum slats are rolled up contactless on winding discs and without using wear-susceptible guide rolls on the slats. The slats themselves are either connected to each other hinge-free using laterally positioned flexible high-performance ties. This means-no wear, low maintenance and minimization of secondary damage following a crash due to the swift replacement of individual slats. Wear-sensitive guide rollers and hinges are no longer required.



As standard a contactless pre-running photocell and a stationary photocell on the bottom edge or in case of the Albany RR3000 ISO a door line photocell are provided. Coloured design variants for the aluminum slats, side frame and top roll cover in numerous RAL colours ensure attractive solutions.

The door curtain of the models Albany RR3000, RR3000R and RR3000XXL consists of anodized, double-walled aluminum lamellas. Optionally windows and perforated sheet slats are available.

The door Albany RR3000 ISO is equipped with highly thermally insulated sandwich lamellas consisting of foam (thickness 50 mm) covered by metal sheet trays in silver (RAL 9006). The k value (heat transfer coefficient) for the curtain achieved with this is 0.9 W/m<sup>2</sup>K and 1.5 W/m<sup>2</sup>K for a complete door (example: 4 x 4 m). Optionally lamellas with shockproof Polycarbonate panels can be integrated in the door blade, gaining a transparency of up to 67%.



Thermally insulated sandwich lamellas Type RR3000 ISO

The door blade of the Albany RR3000 Vision offers the highest degree of transparency. It is equipped with shockproof Polycarbonate panels, gaining 70 % transparency. The Albany RR3000 XXL for extremely large door openings and the Albany RR3000 R for confined spaces round up the product range.





The energy-efficient one – Albany RR3000 ISO



Albany RR3000 ISO with windows



The transparent one – Albany RR3000 Vision



The space-saver – Albany RR3000 R



The big one – Albany RR3000 XXL

# Doors for process applications

W max.: 4000 mm  
H max.: 3500 mm



## Albany RP300

Machine protection doors protect people and processes in highly-automated commercial areas and make automation safer. The Albany RP300 is a machine protection door with narrow side frames made from aluminium. Depending on the intended use, there are various flexible curtain designs and colours available. The plastic glide elements hold the curtain firmly in the guide rails even if pressure is exerted by a person or item. It allows short cycle times and can be installed in machines, on production lines and railing systems within close proximity to the machine.

W max.: 3500 mm  
H max.: 3000 mm



## Albany RP2000

If complete protection even against pressing in of the curtain is required, then the Albany RP2000, with its sturdy rigid curtain made from aluminium slats, is the perfect solution. The side frames are self-supporting and are made from galvanised sheet steel profile. The design is available in accordance with various factory standards. The door has short opening and closing cycle times. As option a curtain for laser protection is available.

W max.: 5000 mm  
H max.: 5000 mm



## Albany RR3000

The Albany RR3000 from the 3000 series has been specifically designed as a machine protection door for laser systems and automatic welding systems with substantial flying sparks. The curtain comprises double-walled slats, which overlap the transitions like a labyrinth to ensure that the laser does not penetrate. The door has been tested in accordance with DIN EN 60825-5. The design is available in accordance with various factory standards.

# Alternative solutions

## Albany RapidFalt® SF

The sturdy steel Albany RapidFalt® SF folding door is used for frequently used external exits. By positioning the folding doors before or after the opening, the entire opening width and height are retained.



W max.: 6000 mm  
H max.: 6000 mm

## Albany RapidRoll® F

The Albany RapidRoll® F metal roller shutter door is ideal for tall and wide external exits in industrial and warehouse buildings and is frequently used in conjunction with a high-speed roll door. The door is available in manual and electric motor versions.



W max.: 12000 mm  
H max.: 8000 mm

## Albany RapidNorm®

Swing doors offer a high return for minimal procurement costs. The doors are used internally for personnel or forklift traffic. There is a medium-heavy version available for normal demands and a heavy industrial version for high demands.



RapidNorm®  
W max.: 5250 mm  
H max.: 5250 mm

RapidStore®  
W max.: depends on  
the customer's  
requirements  
H max.: 6000 mm

## Albany RapidStore®

Strip curtains can be used for closing large openings. Vital for the effectiveness of a strip curtain is the strip thickness and the overlap.



ASSA ABLOY Entrance Systems is a leading supplier of entrance automation solutions for efficient flow of goods and people. With our globally recognized product brands Besam, Crawford, Megadoor and Albany, we offer products and services dedicated to satisfying end-user needs for safe, secure, convenient and sustainable operations.  
ASSA ABLOY Entrance Systems is a division within ASSA ABLOY.

**ASSA ABLOY**

[www.assaabloyentrance.com](http://www.assaabloyentrance.com)



ASSA ABLOY Entrance Systems  
High Performance Door Solutions

[info.albany@assaabloy.com](mailto:info.albany@assaabloy.com)  
[www.assaabloyentrance.com](http://www.assaabloyentrance.com)

Follow us:



Please enter ASSA ABLOY Entrance  
in the channel's search field.