

Modernization Kit ASSA ABLOY M Wheelchock support lever

ASSA ABLOY

ASSA ABLOY Entrance Systems

The global leader in
door opening solutions



Key Benefit



Safety



Convenience

Make the wheel chock visible from within the cabin

The wheel chock is placed against the rear truck tyre to make sure the truck does not crawl during loading or unloading. In such event, the leveler could descent unexpectedly, possibly with people or material on top of it.

Putting the wheel chock in position can be dangerous. You have to get between the truck tyres.

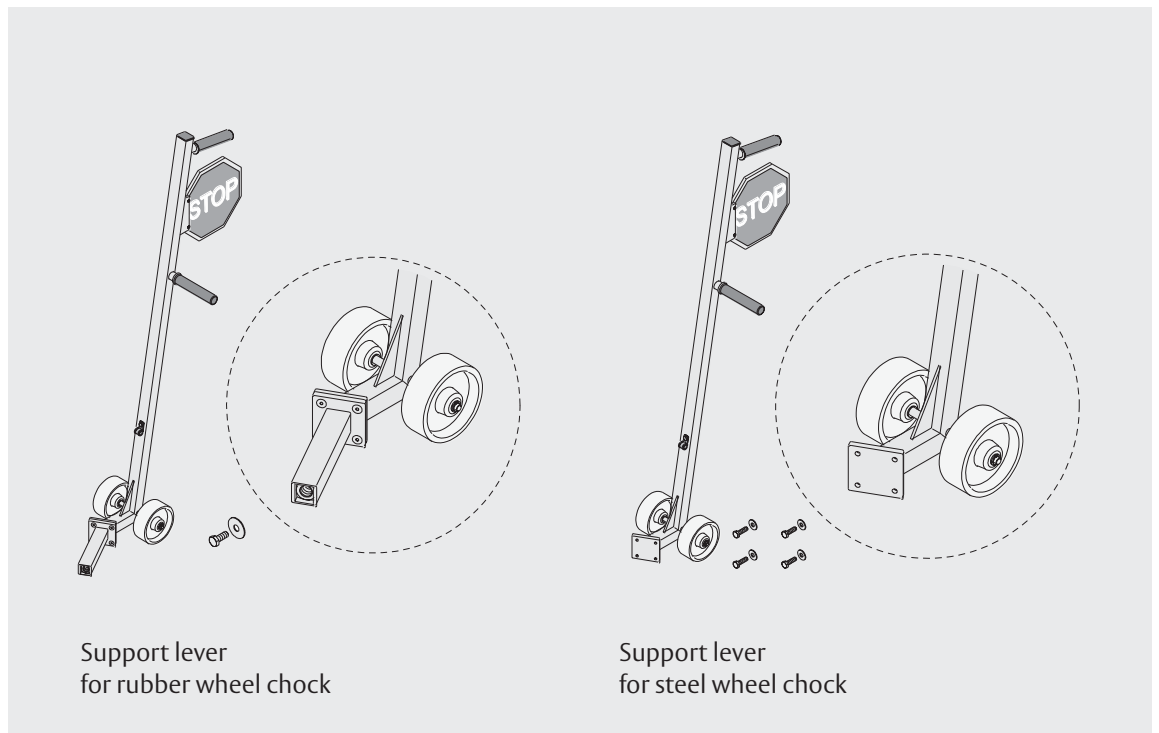
For the truck driver the wheel chock is not always visible, so it could happen that an attempt is made to drive off. Although the truck will likely be unable to move, this can still cause damage to the wheel chock itself.

A wheel chock support lever, in a bright yellow color and with a notable stop sign, will make the driver aware that the wheel chock is in place.

Not only will this wheel chock support lever be better visible at the loading dock. It also helps the workers to place or remove the wheel chock from behind a truck wheel a lot safer.

The wheel chock support lever can be installed on both rubber and steel wheel chocks. It can be retrofitted to existing wheel chocks.

Overview



Available kits for ASSA ABLOY M Wheel chock lever

Name	Fits to	Remarks
Support lever for rubber WC	Rubber wheel chock	Wheel chock not included
Support lever for steel WC	Steel wheel chock	Wheel chock not included

Benefits

Key benefits are:

- Creates safe working conditions, avoiding injuries, damages and interruptions in the flow
- Fulfils the growing demands from Work Safety Bodies
- Wheel chock is better visible from within the truck cabin
- Easier to put the wheel chock in place